

REF: MRD 144/6

cc: Keyworth
Newcastle

March 1985

FINANCIAL ASSISTANCE FOR MINERAL EXPLORATION

COMPANY: ACPIN EXPLORATIONS (UK) LTD.

PROJECT: WEARDALE PROJECT. (I & II)

Material moved to open file No: MRD 144/6.

Contents:

From MRD 84/6 (AE 38): (PHASE I)

- Extract from application, statement of relevant geology 10.8.71
- Location map.
- Plan of area showing sample locations 1971, 1:10,560.
- Contoured assay values for lead, D Grid. 26.11.71
- " " " Zinc, " "
- " " " Zinc, C Grid. "
- " " " Lead " 27.11.71
- A. Traverse, Geochemical Results 1.12.71.
- A.A.S. analysis for lead/zinc, soil samples Traverse A 22.10.71
- " " " " " B "
- Progress report, August 1971.
- Progress report, September 1971.
- Geochemical reconnaissance results, October 1971.
- Progress report November 1971. F.H. Fitch.

From MRD 84/6/2 (AE38/2): (PHASE II)

- Extract from application 18.12.72.
- Plan of area, 1:10,560.
- Letter from F.H. Fitch "Drilling at Dead Friars" 5.2.73

MRD 144/6 continued...

- Progress report MS 7218, October 1972.
- Dead Friars BH1, Feb. 1973 - MS 7305
- Dead Friars BH2, MS 7307 April 73.
- Fig. 1 - Log of BH1, BH2, BH3. March 1973.
- Fig. 2 - Location of BH Nos 1-4 May 73 1:10,560
- Fig. 3 - Log of BH3, BH4, May 1973.
- Progress report MS7313, June 1973
- Trenching report MS 7323 September 1973.

Name of Project:-

"Acmin's Weardale Project"

Outline of Project:-

Exploration for and exploitation of lead and zinc pursuant to an Agreement between the Company and The Weardale Lead Company Ltd. dated 22 June 1971 (copy enclosed in confidence).

Minerals Sought:-

Lead and zinc ores, and fluorspar.

Details of Site:-

Phase 1 of the project will be restricted to the headquarters of Burnhope Burn, west of the B6278, in the northeast of the concession area, outlined on the enclosed print from Ordnance Survey One Inch to One Mile Map, Sheet 84. Other parts of the concession will be explored when experience of the proposed techniques has been gained from Phase 1.

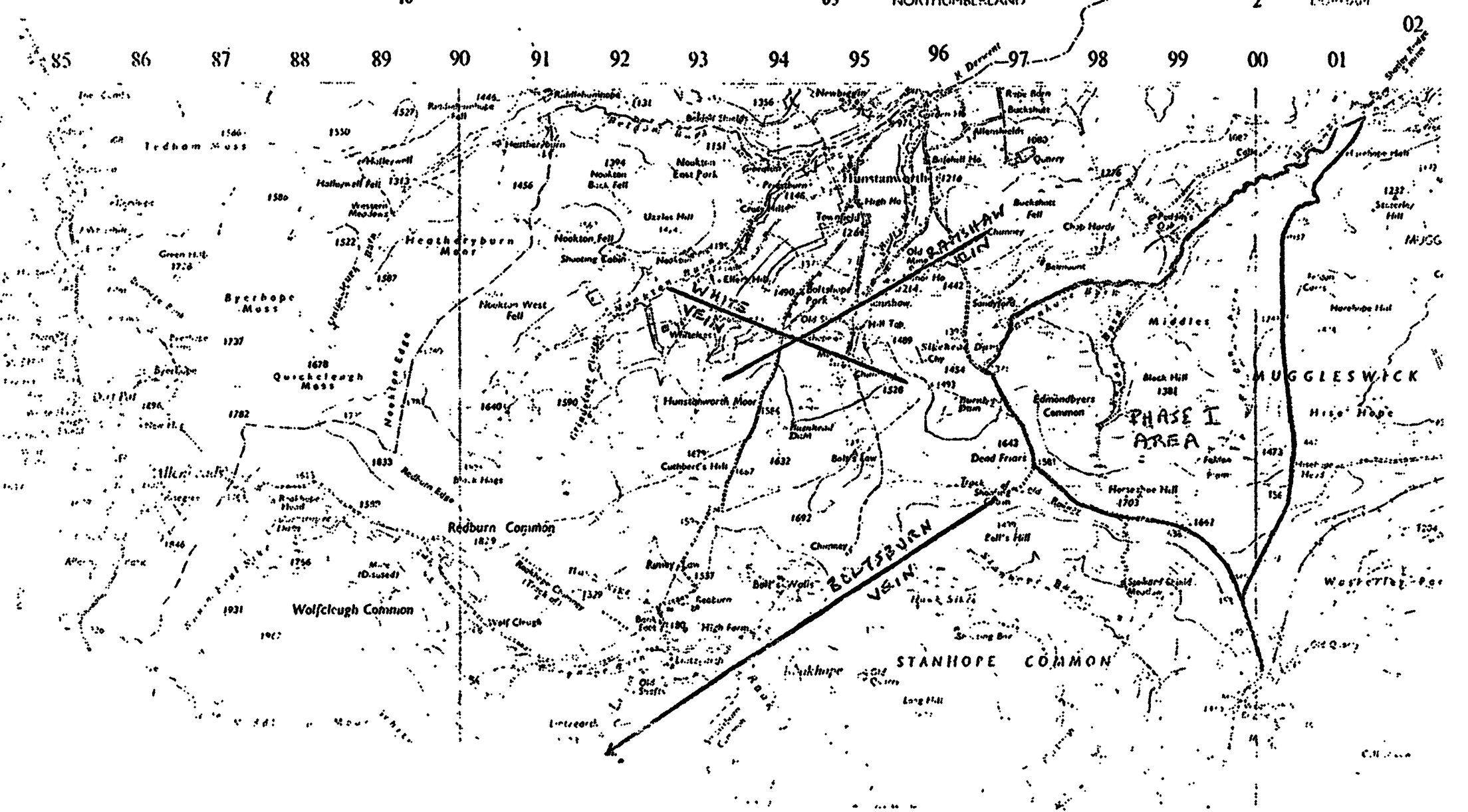
Statement of Geology:-

The Phase 1 area crosses the trend of the Boltsburn Vein (see enclosed print) which has been traced for 7½ miles and yielded 127,785 tons of lead concentrates and 7,299 tons of fluorspar between 1818 and 1940, proving it next to the Burtree Pasture Vein the richest vein worked in the Weardale area of the Northern Pennine Orefield (Mem. Geol. Sur. Gt. Brit., 1948, pp. 228-233). Ore was present in the northeast face when the Boltsburn Mine was abandoned because of the increasing depth of the Great Limestone, which was the most productive stratum. The White Vein also trends towards the Phase 1 area; although poorly mineralised in itself, any intersection between this vein and the Boltsburn Vein below the area could be the site of strong mineralisation.

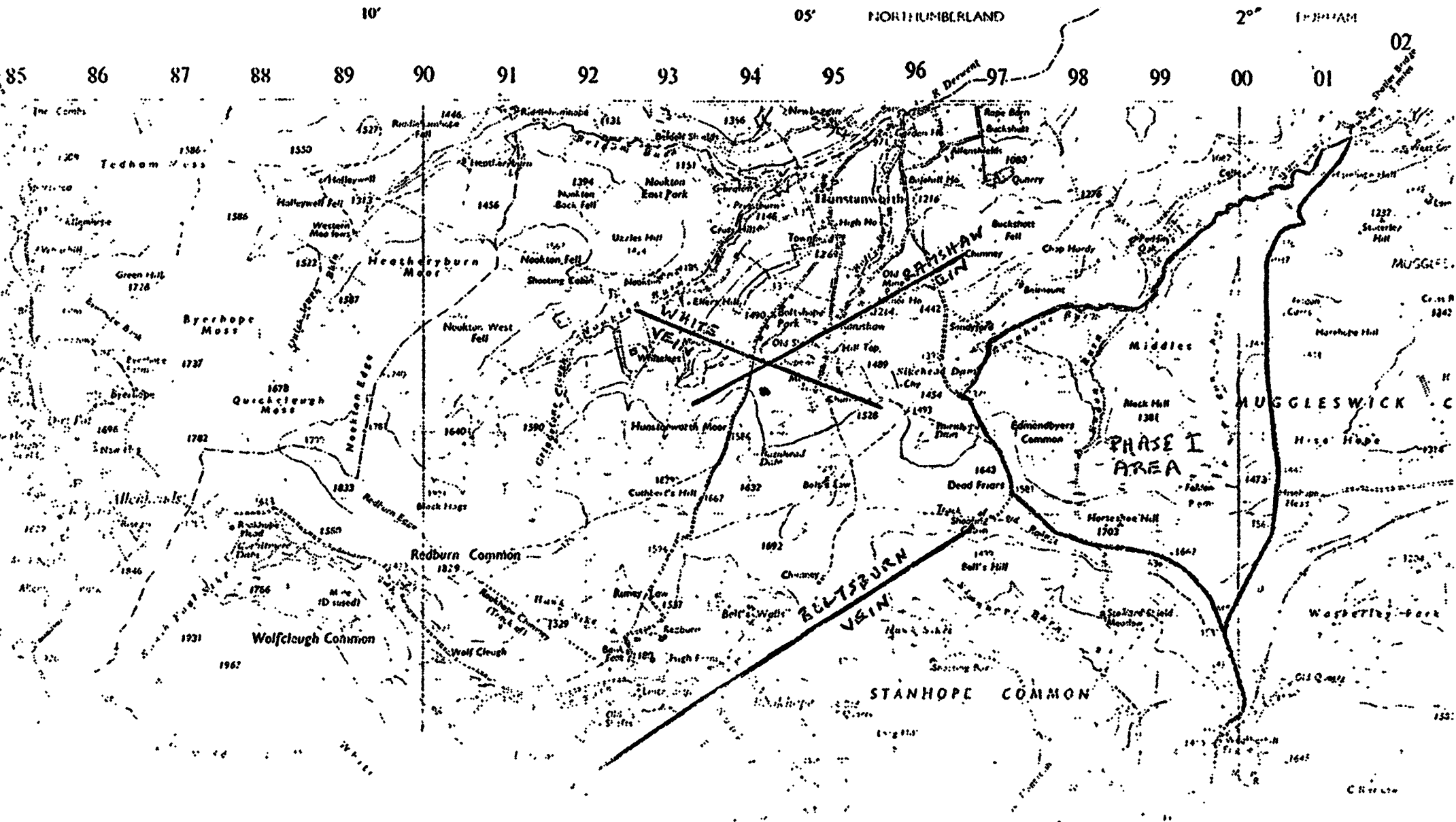
TEESDALE

10' 05' NORTHUMBERLAND 2° 01'

85 86 87 88 89 90 91 92 93 94 95 96 97 98 99 00 01 02



TEESDALE



10°

05'

NORTHUMBRLAND

2°

DURHAM

02

85 86 87 88 89 90 91 92 93 94 95 96 97 98 99 00 01

PHASE I
AREA

MUGGLESWICK

STANHOPE COMMON

C. H. R. L. W.

Mackay & Schnellmann Ltd

GEOLOGICAL AND MINING CONSULTANTS



G. J. Schnellmann PhD(Lond) MIMM MAIME (Chairman)
W. G. Yuill B.Sc. DIC MIMM MCIMM (Managing)
F. H. Fitch OBE DSc MIMM MAustIMM
I. H. McLean A.C.S.M. MIMM MIO
E. Ledgerwood BSc AKC MIMM
P. E. McGowan BSc(mining) MIMM

Subsidiary
Mackay & Schnellmann Pty Ltd
16 St George's Terrace Perth
Western Australia 6000

LINCOLN HOUSE 296/302 HIGH HOLBORN · LONDON WC1V 7JJ

Telephone: 01-405 4806/7

Cables: Pyrochlore London

Telex: LDN 268703

MRD 84/6/2 (AE 38/e)

5th February 1973

Attention Mr. Lees

Department of Trade & Industry,
Thames House South,
Millbank,
London SW1P 4QJ.

Dear Sirs,

ACMIN Explorations (U.K.) Limited
Drilling at Dead Friars near Edmondbyers

The deep drill-hole designed to intersect the Boltsburn Vein in the Great Limestone below Dead Friars was unfortunately deflected from its designed inclination by variations in the hardness of the strata intersected and missed its target by something like 100 feet.

Efforts to bring the hole back on course by the use of wedges failed to achieve their purpose but added considerably to the time spent on the hole.

It is now being grouted with cement prior to abandonment and, on the instructions of our client, we are now starting a second hole at a shallower inclination to allow for expected deflection but still achieve the required target in the Great Limestone.

The unexpectedly protracted nature of this drilling is regretted, from every point of view, but we shall continue to do our best to minimise inconvenience to those who have other interests in the area.

Yours faithfully,

F.H. Fitch.

INFORMATION GIVEN IN SUPPORT OF A SUBMISSION FOR
CONSIDERATION FOR FINANCIAL ASSISTANCE FOR MINERAL
EXPLORATION

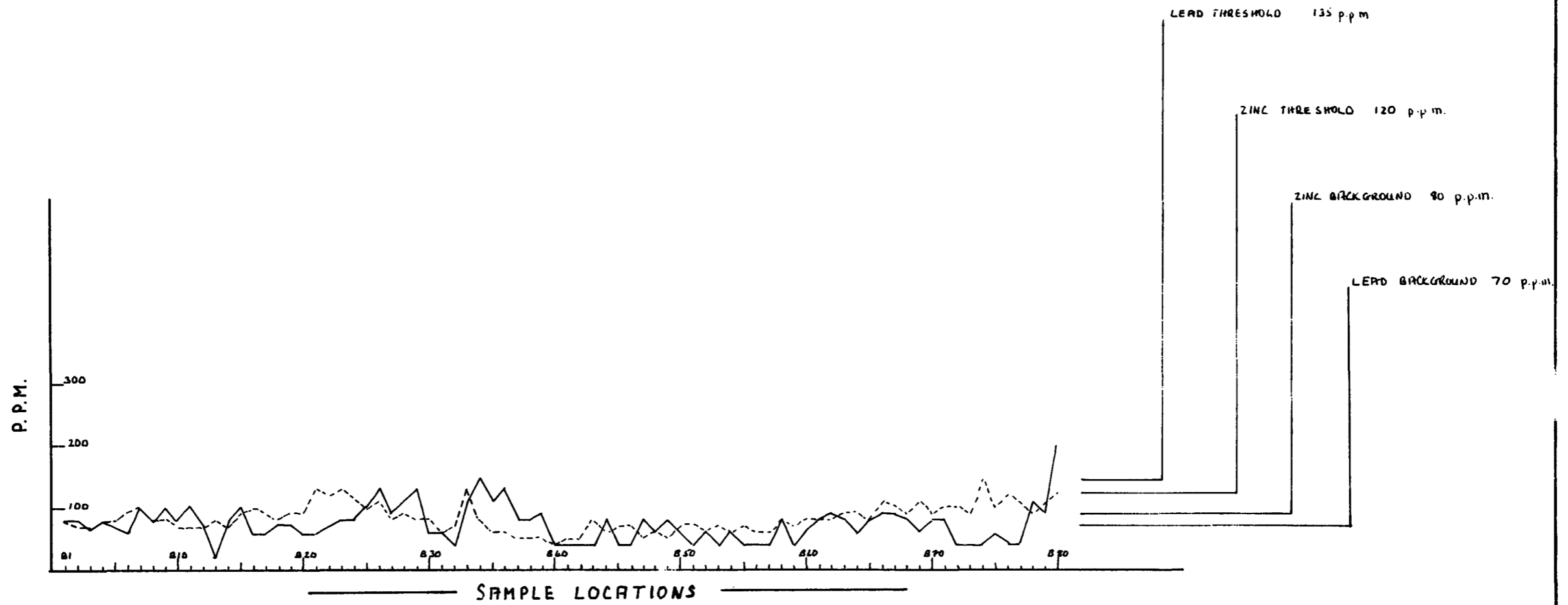
- 4. (a) Acmin's Weardale project Phase 2.
 - (b) Extension of Phase 1 area west to Dead Friars and Bells Hill area outlined on enclosed 1: 10,560 Sketch Map.
 - (c) Lead and zinc ores and fluorspar.
 - (d) Target is possible extension of the boltsburn vein in the great limestone beyond the north/eastern end of former mining, see enclosed Sketch Map.
-
- 7. (a) Drilling to the projected inter-section of of the boltsburn vein and great limestone about 200 feet beyond north/eastern end of former mining, at invertical depths of about 800 feet. If the vein or associated mineralised "flats" are intersected, two deflections will be drilled from the same hole to obtain further information about the extent and grade of mineralisation.
 - (b) Starting date 26th November, 1972.
Target day for completion 15th January, 1973.

18th December, 1972.

V.E. Treves

.....

V.E. TREVES
(Alternate Director and
Secretary)



ACMIN EXPLORATION (U.K.) LTD.

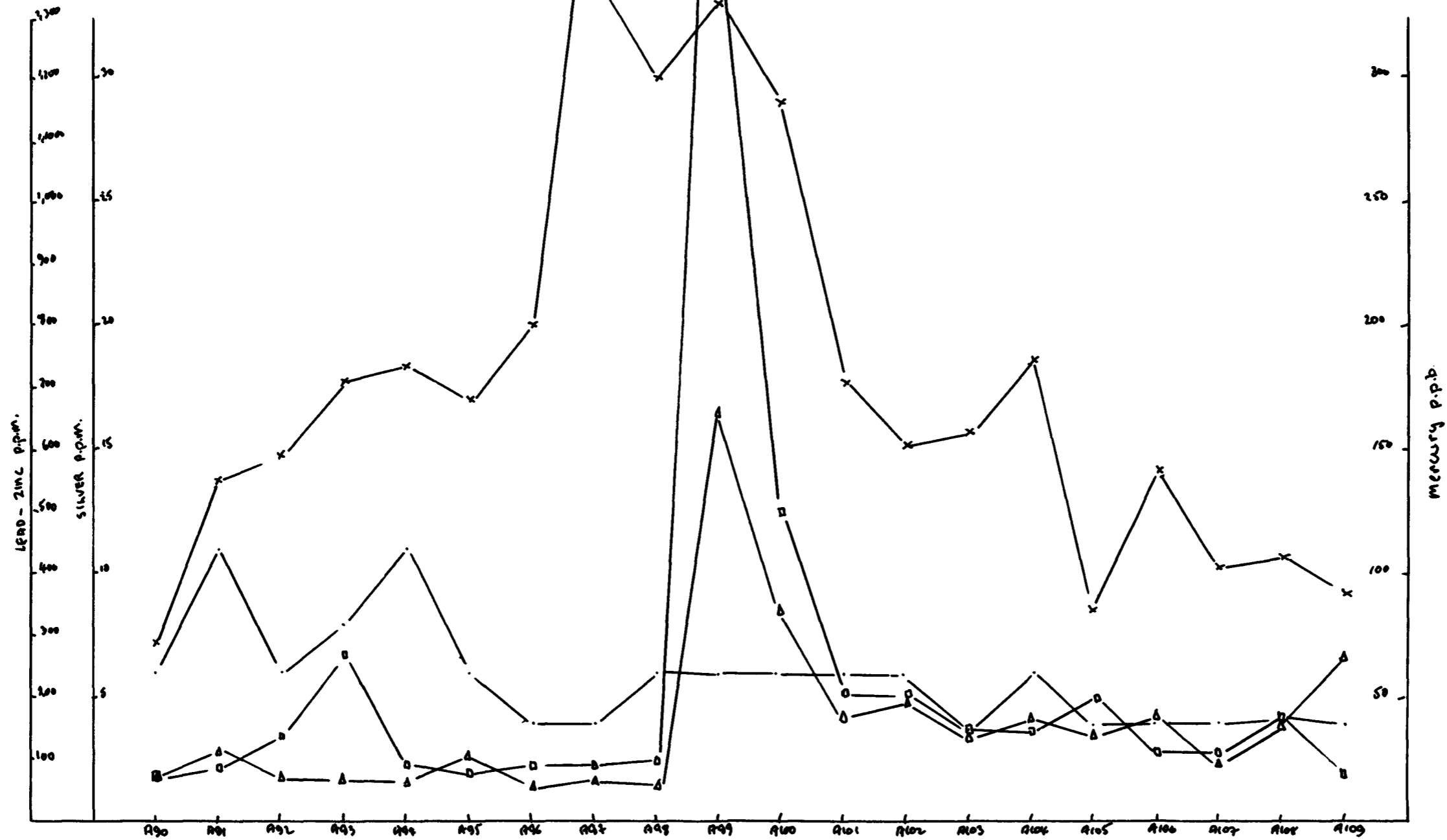
WEARDALE LEAD-ZINC PROJECT.

TRAVERSE B . ANALYSIS FOR LEAD/ZINC . SOIL SAMPLES. (R.A.S.)

——— - LEAD. p.p.m.
 - - - - - - ZINC. p.p.m.

D.G.L. 22.10.71.

4B

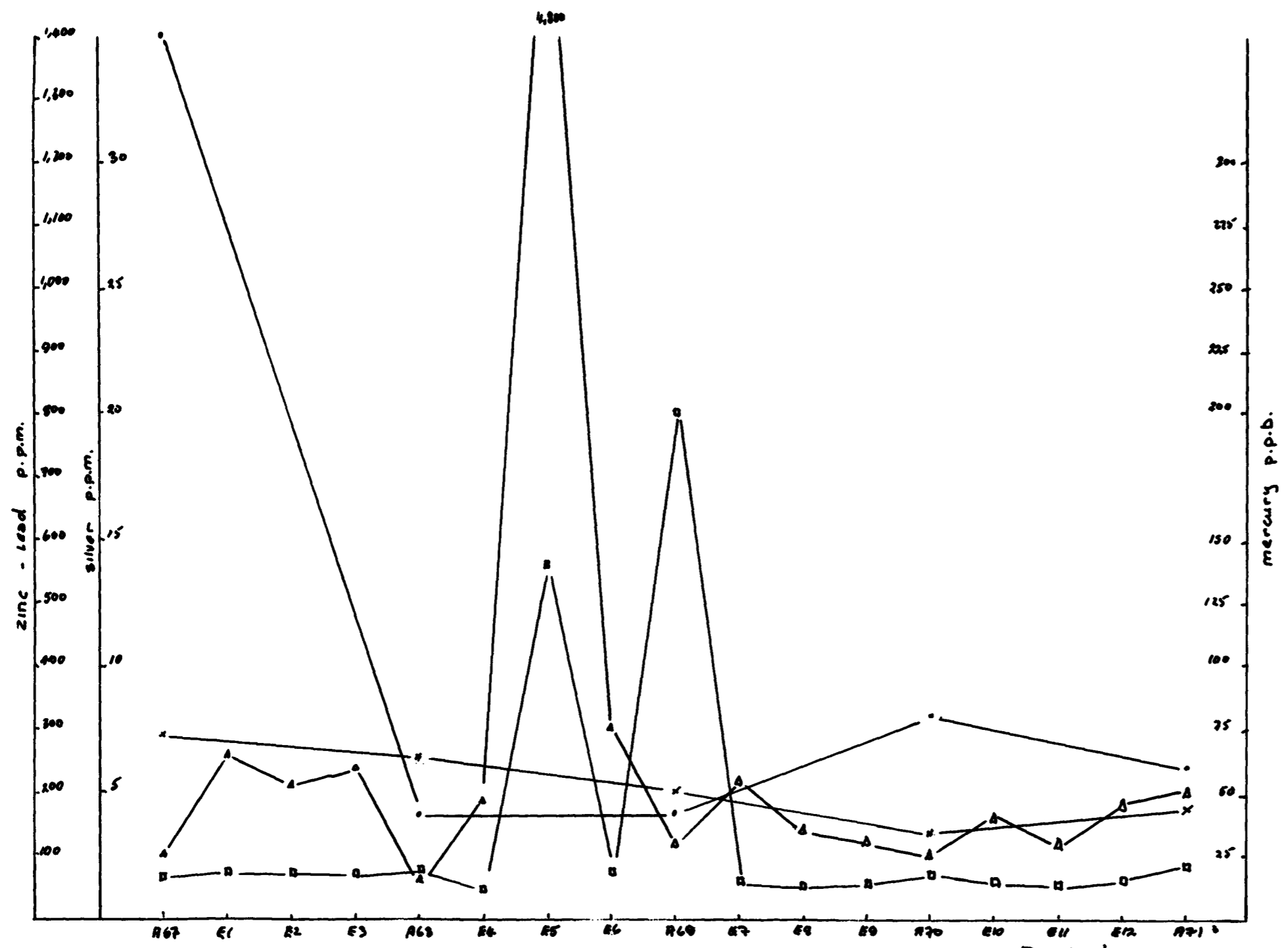


A TRAVERSE - Geochemical Results.

. — . SILVER
 x — x MERCURY
 A — A ZINC
 D — D LEAD.

MACKAY + SCHNELLMANN LTD.

O.G.L. 1.12.71

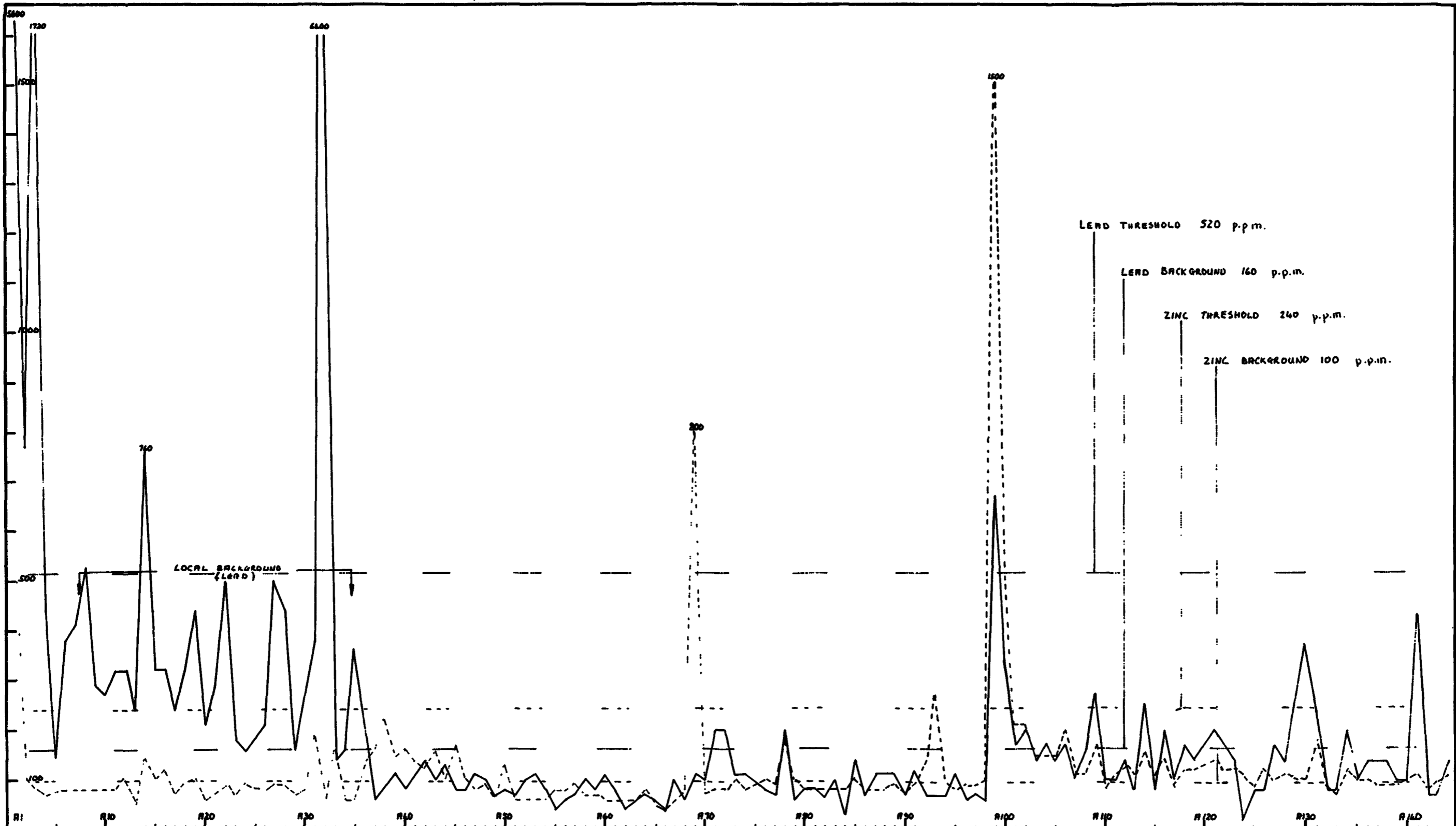


A TRAVERSE - GEO CHEMICAL ANALYSES

- o — o SILVER
- x — x MERCURY
- Δ — Δ LEAD
- — □ ZINC

ACMIN - WERRDALE PROJECT

MACKAY + SCHNEIDMANN LTD.
D.G.L. 1.12.71.



ACMIN EXPLORATION (U.K.) LTD.
WEARDALE LEAD - ZINC PROJECT

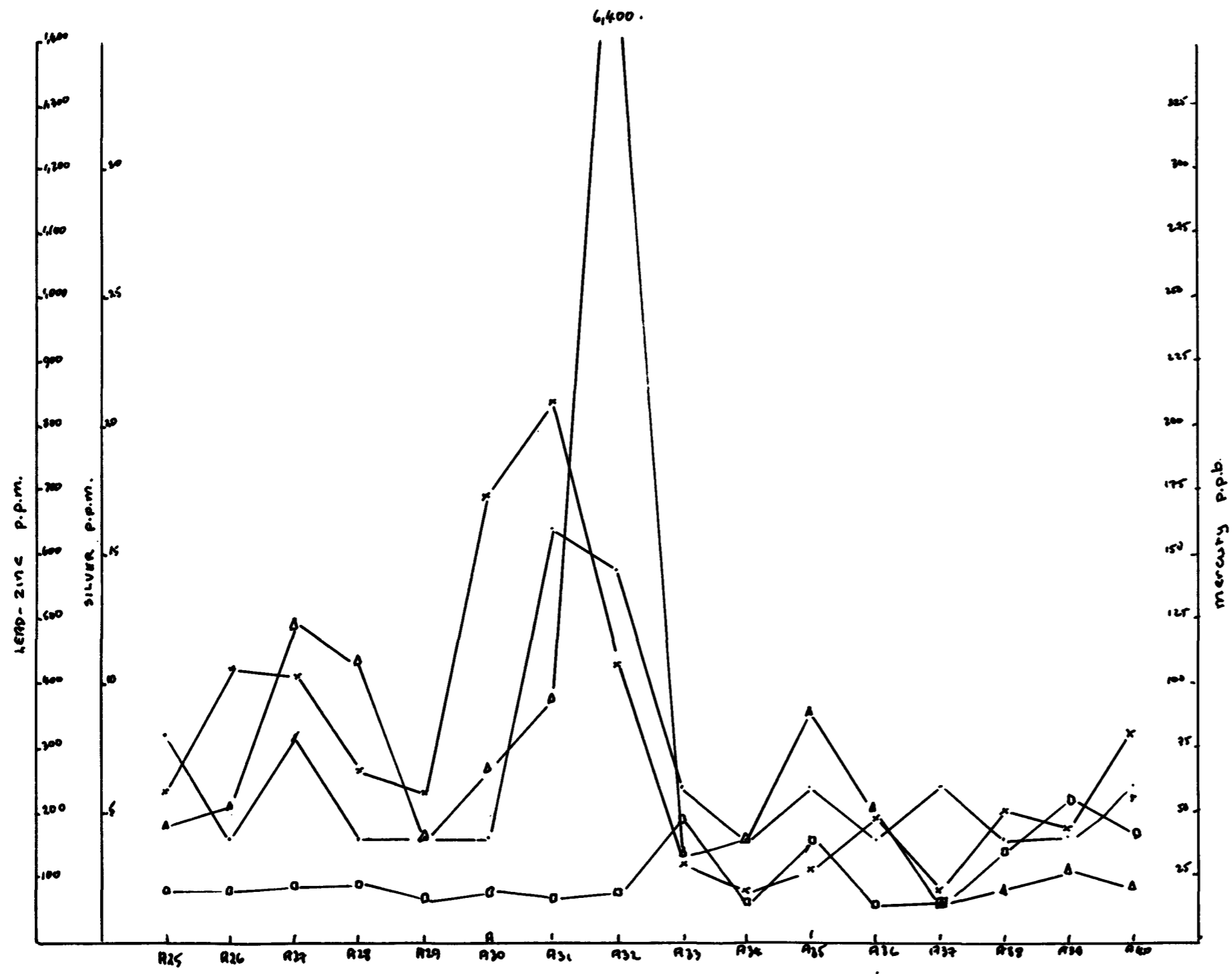
SAMPLE LOCATIONS.

TRAVERSE A . ANALYSIS FOR LEAD/ZINC . SOIL SAMPLES (A.A.S.)

— — LEAD. p.p.m.
- - - - - ZINC. p.p.m.

22.10.71 D.G.L.

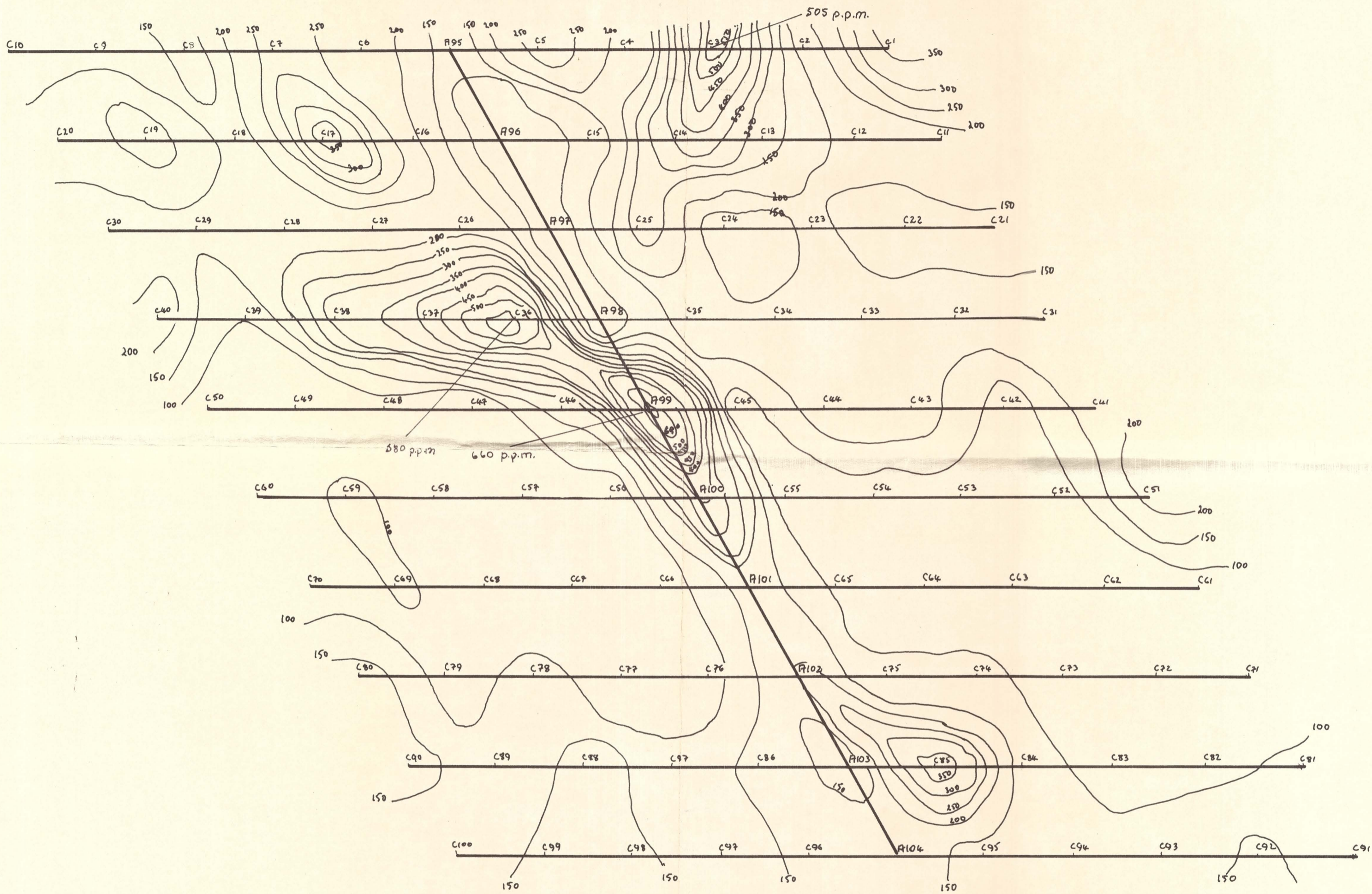
44



A TRAVERSE - GEOCHEMICAL RESULTS.

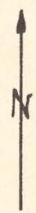
— . — . SILVER -
 x — x MERCURY.
 Δ — Δ LEAD.
 ○ — ○ ZINC.

MACKAY + SCHNEELMANN LTD.
 O.G.L. 1.12.71.



SCALE 1" = 100'

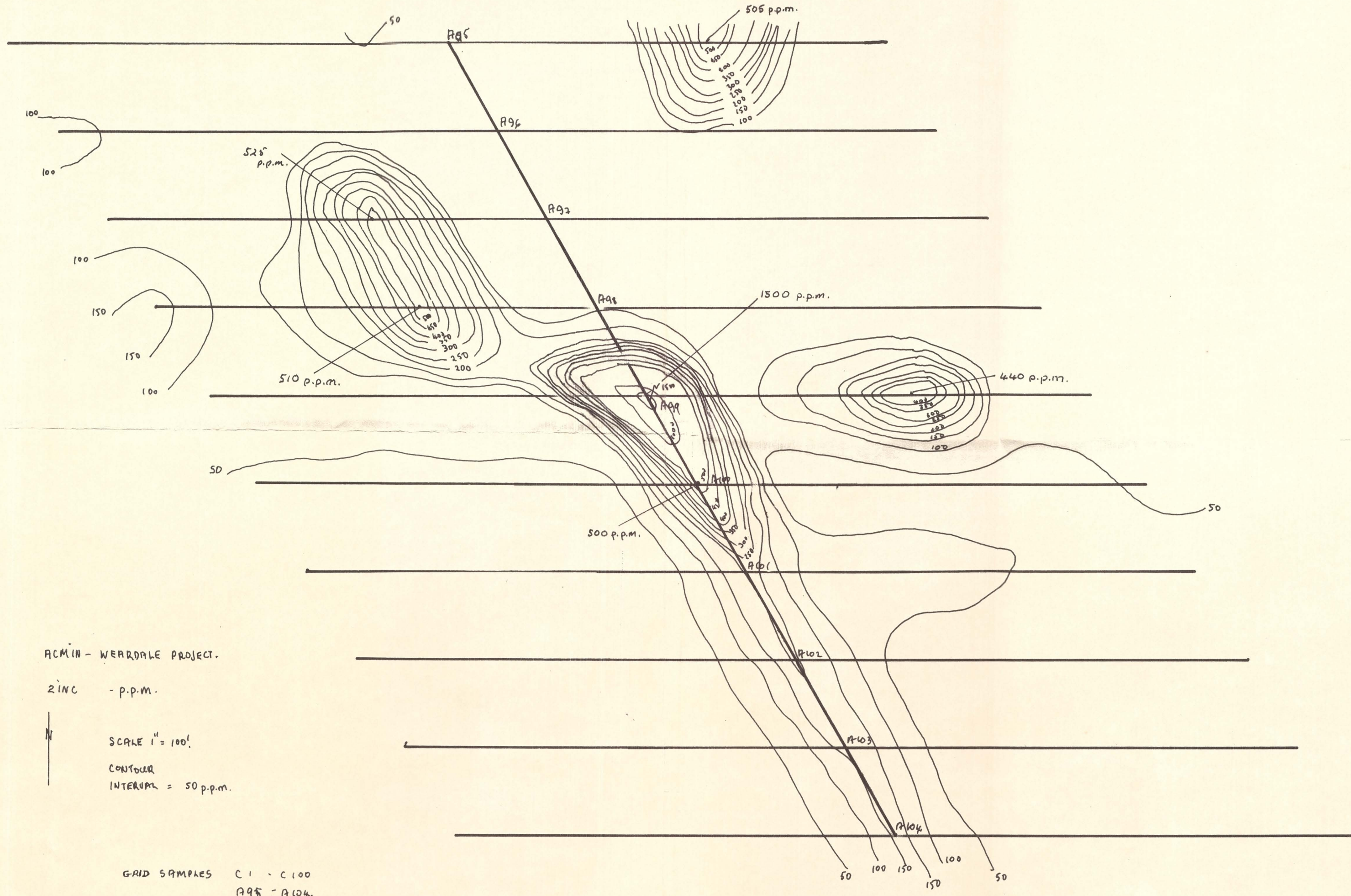
CONTOUR INTERVAL .50 p.p.m.



GRID SAMPLES C1 - C100.
A95 - A104.

LEAD p.p.m.

ADMIN - WEARABLE PROJECT.



ACMIN - WEARDALE PROJECT.

ZINC - p.p.m.



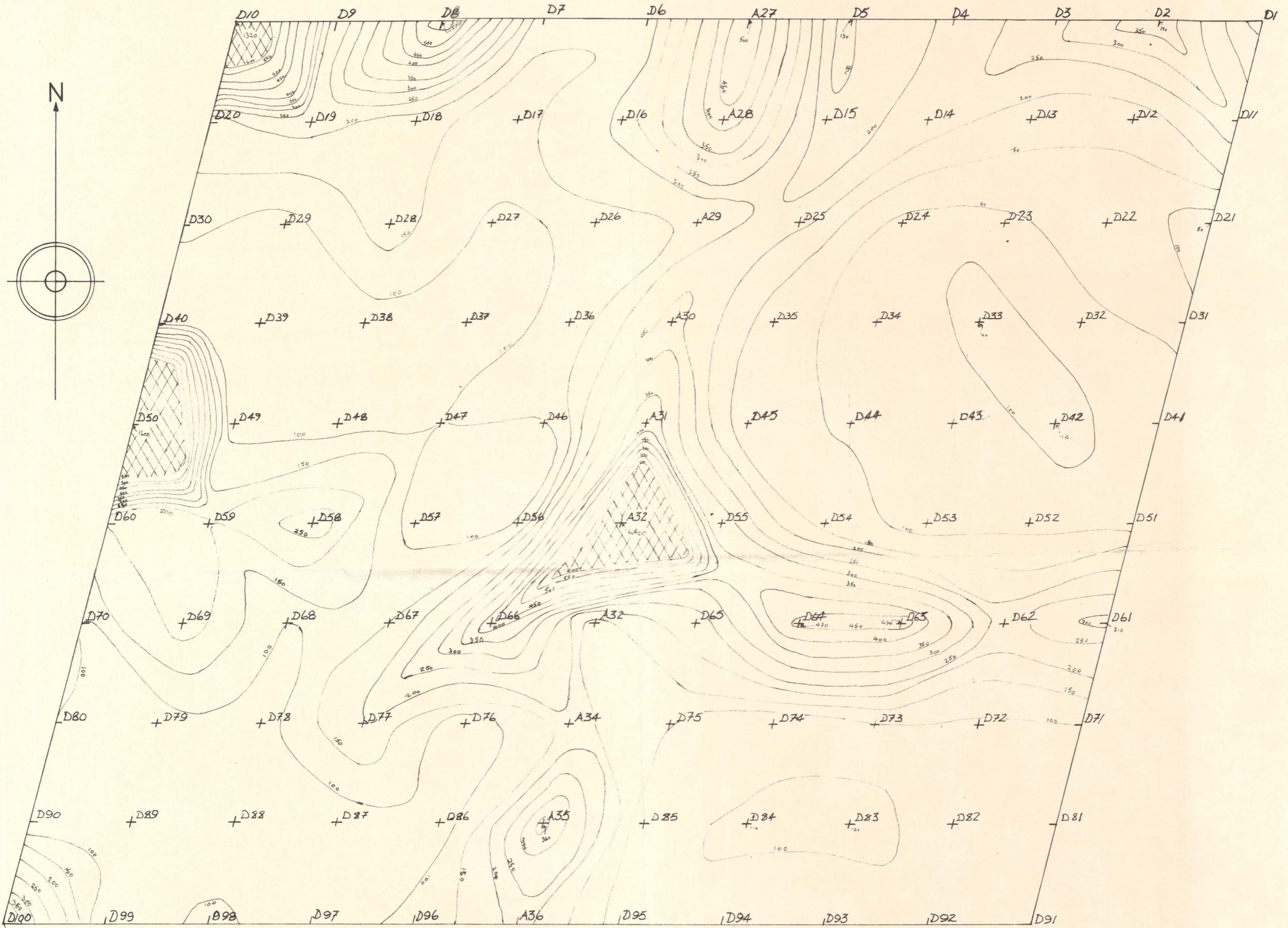
SCALE 1" = 100'

CONTOUR
INTERVAL = 50 p.p.m.

GRID SAMPLES C1 - C100
A95 - A104.

D.G.H. 26.4.71.


"D" GRID LEAD



D.J.W.J. 26/11/71

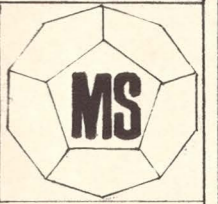
SCALE 1inch = 100feet.

CONTOUR INTERVAL 50 p.p.m.

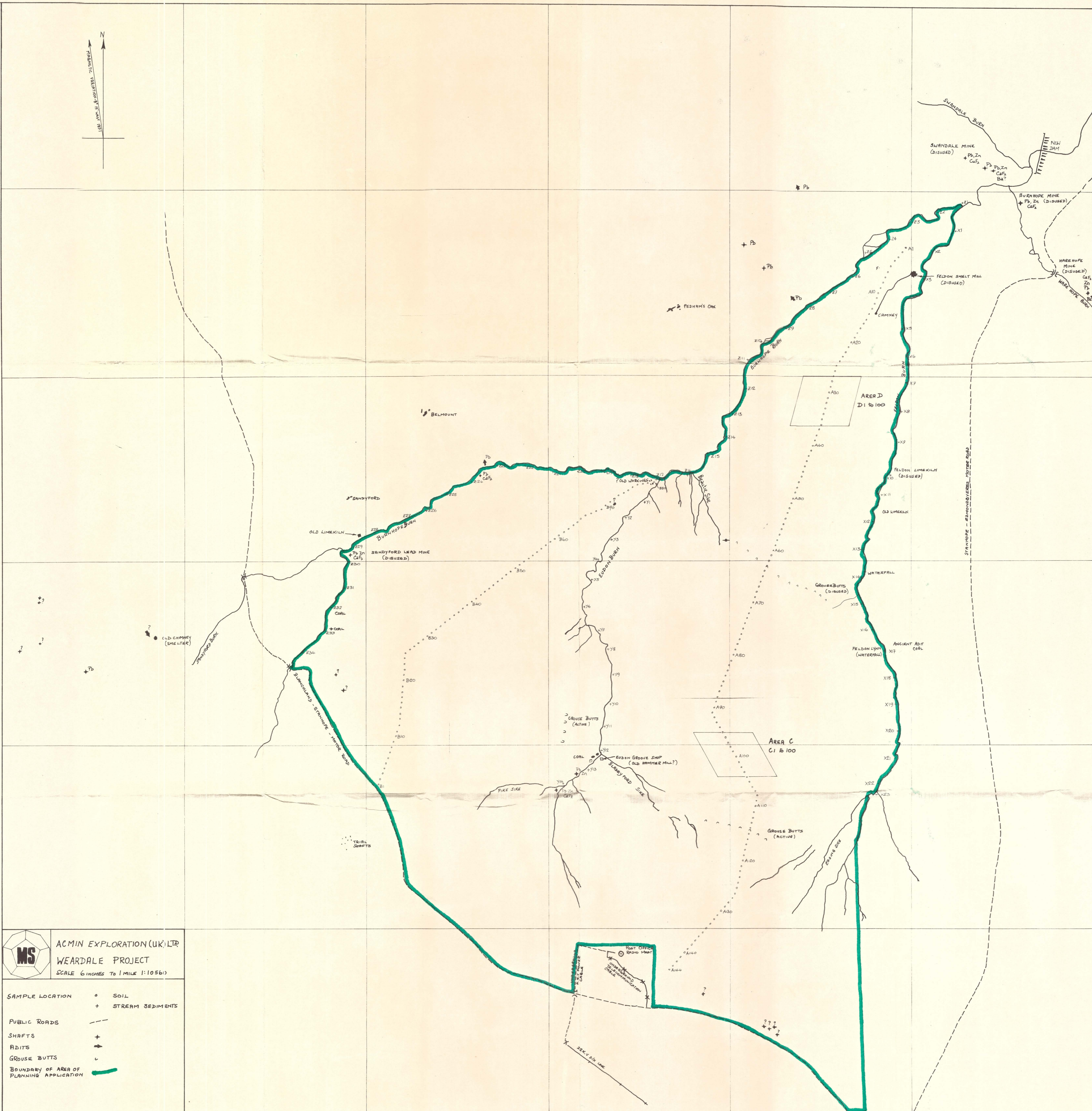
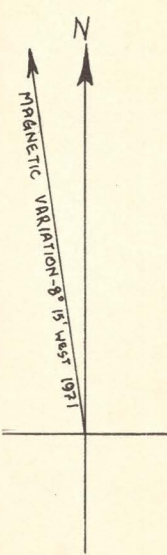
 anomalous high areas over 600ppm.


MACKAY & SCHNELLMANN Ltd.


ACMIN - WEARDALE PROJECT
 CONTOURED ASSAY VALUES FOR
LEAD

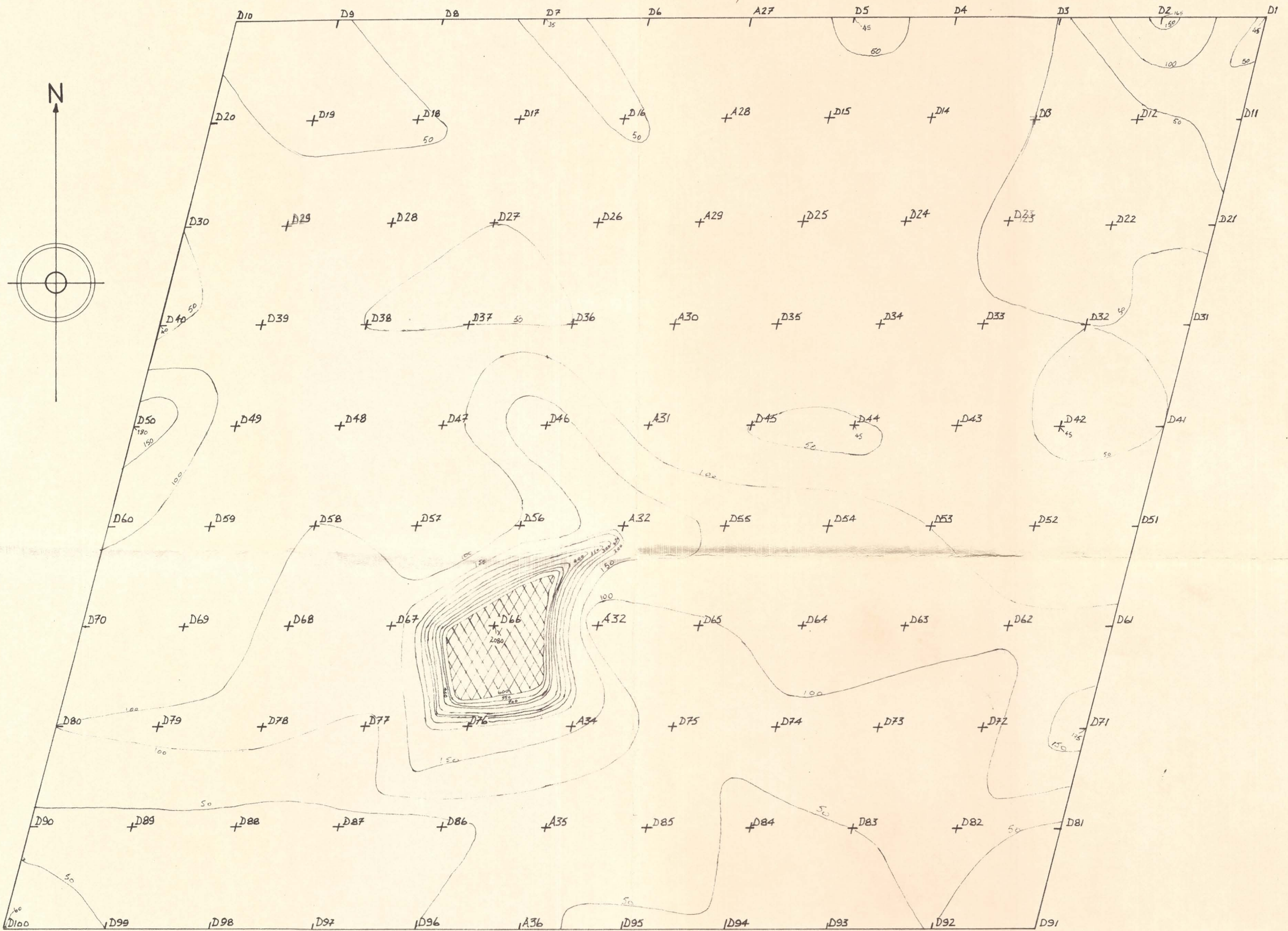


SAMPLES A27 to A36 inclusive, D1 to D100 GRID




ACMIN EXPLORATION (UK) LTD
WEARDALE PROJECT
 SCALE 6 INCHES TO 1 MILE (1:1056)


SAMPLE LOCATION ◦ SOIL
 + STREAM SEDIMENTS
PUBLIC ROADS - - - -
SHAFTS +
ADITS -
GROUSE BUTTS L
BOUNDARY OF AREA OF PLANNING APPLICATION 



D.J.W.J. 26/11/71.

SCALE 1inch = 100 feet.

CONTOUR INTERVAL 50 p.p.m.

 anomalous high areas over 600ppm.

MACKAY & SCHNELLMANN Ltd.

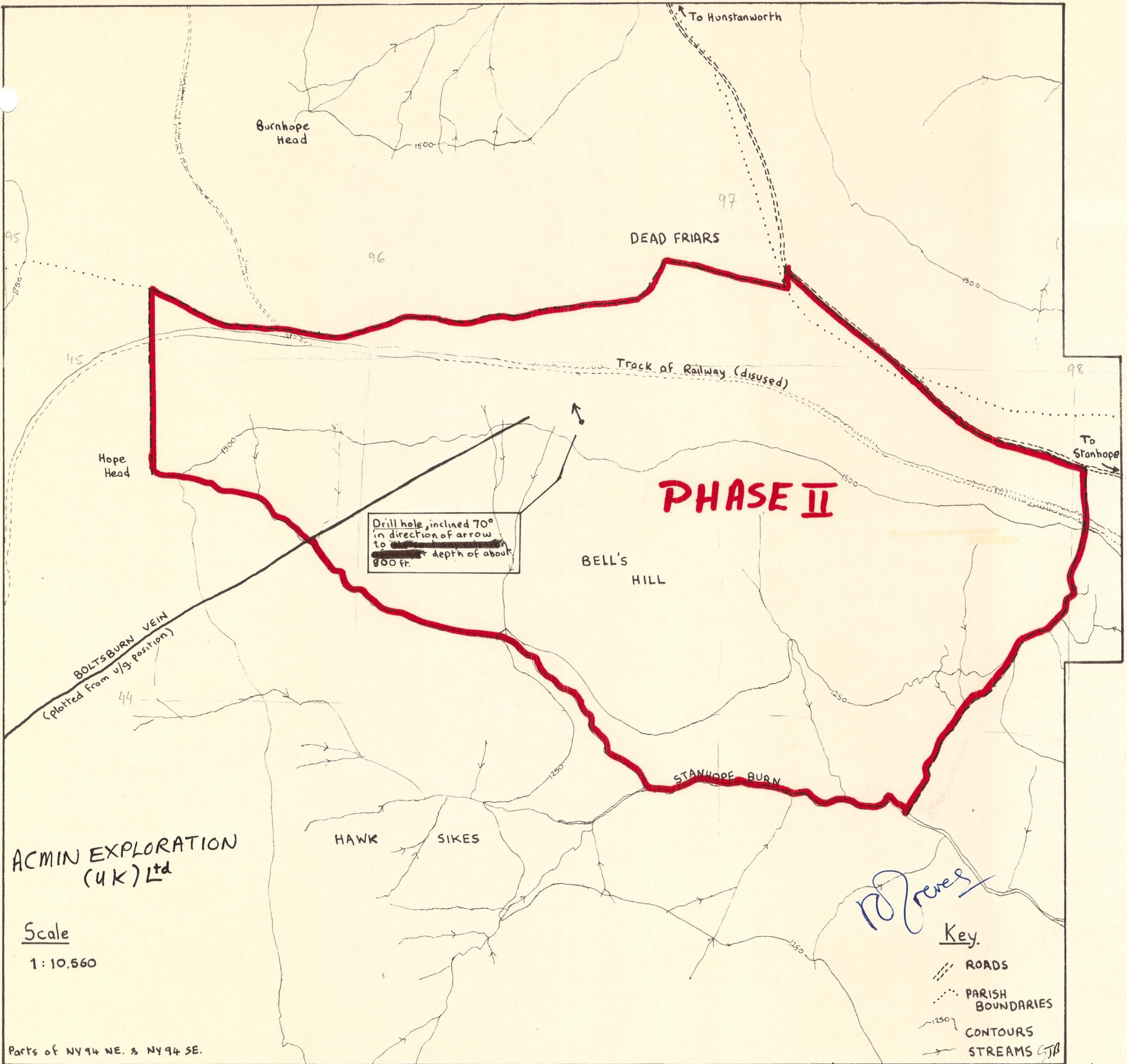
ACMIN - WEARDALE PROJECT

CONTOURED ASSAY VALUES FOR

ZINC

SAMPLES A27 to A36 inclusive, D1 to D100 GRID





ACMIN EXPLORATION
(UK) Ltd

Scale
1:10,560

Parts of NY 94 NE. & NY 94 SE.

R. Greaves

- Key.**
- ROADS
 - PARISH BOUNDARIES
 - CONTOURS
 - STREAMS

Prepared by Mackay + Schnellmann Ltd.

EXTRACT
4(b) Application 18.12.72 Leedsdale sheet 84. O.S. 1:63,360