

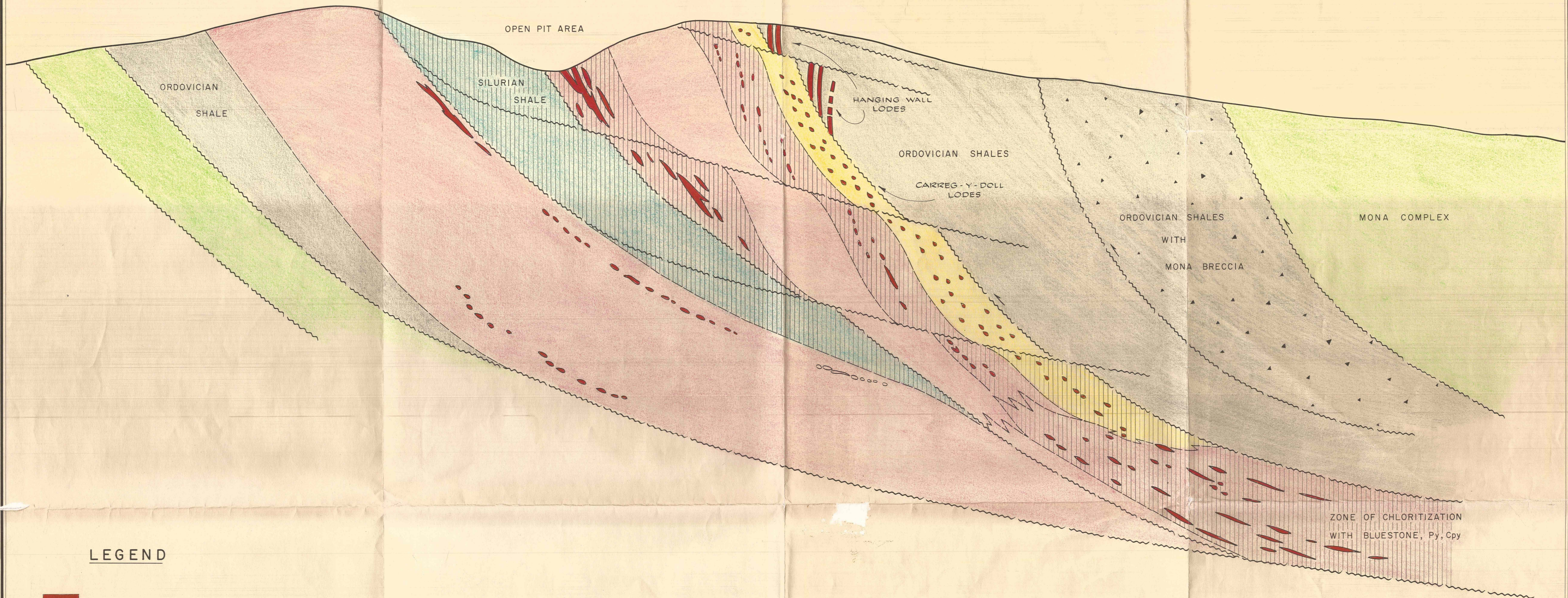
S

N

← SOUTHERN FELSITE →

← NORTHERN FELSITE →

← CIGOL NORTHERN ZONE →



LEGEND

- 1 MINERALIZATION
- 2 SILURIAN SHALES (WITH MONOGRAPTUS)
- 3 ACID BASIC TUFFS, SHALES, LOCAL CHLORITIZATION (PRINCIPAL SULPHIDE HORIZON - Cu, Zn, Pb, Ag)
- 4 CHERTS, SILICIFIED SHALE, ("BLUESTONE" GROUND [COMPLEX SULPHIDES - Cu, Pb, Zn, Ag])
MAY OCCUR LOCALLY WITHIN No. 2
- 5 RHYOLITE (FELSITE) FRAGMENTALS, LAVAS, FLOW BRECCIAS, LOCALLY SILICIFIED
- 6 ALTERED BASIC LAVAS, TUFFS (GREENSTONE), SPORADIC SULPHIDE (PY)
- 7 SHALES (BLACK, GREY, GREEN), PROBABLY ORDOVICIAN
- 8 SHALES WITH BRECCIAS (ORDOVICIAN, MONA SCHIST FRAGMENTS)
- 9 MONA SCHIST AND GNEISS
- 10 QUARTZ BRECCIA (CARREG-Y-DOLL TYPE) SULPHIDE (Cu-BEARING) HORIZON

INTERMINE LIMITED, TORONTO · CANADA

PARYS MONA PROJECT
ANGLESEY ~ WALES, U.K.

**GENERALISED SECTION THROUGH
PARYS MONA MINES**

DIAGRAMATIC SCALE

DRAWN BY R.E., 1972.